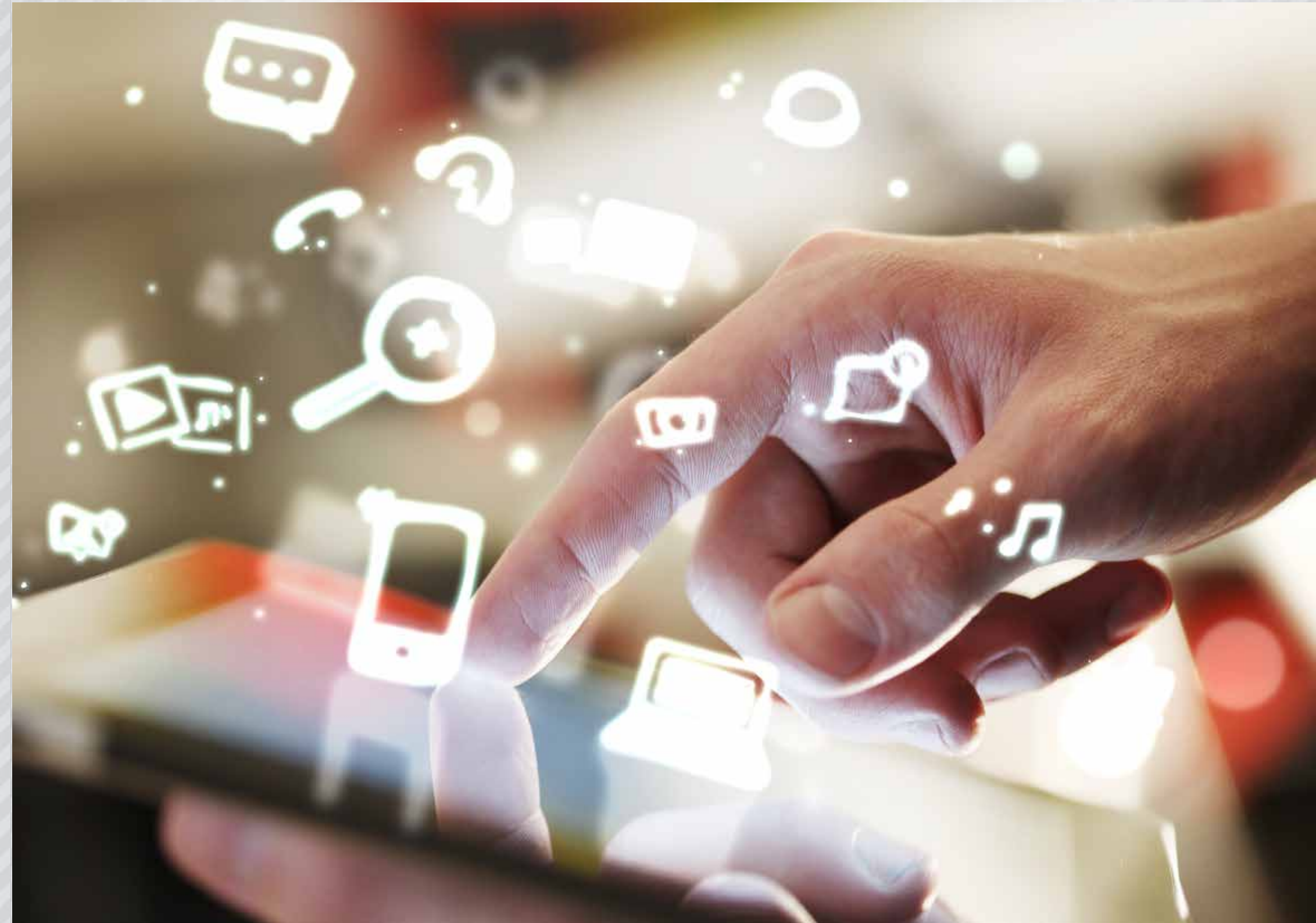




SYNERGY
IT SOLUTIONS

CONTENTS

- 1. WHO WE ARE?
- 2. SERVICES
- 3. SOLUTIONS
- 4. TECHNOLOGY
- 6. CLIENTS & PARTNERS





WHO WE ARE?

We are an Information Technology company based on Innovation Solutions & Technologies. We offer wide range of advanced solutions in software development and testing services. We invest in and coordinates R&D (research & development), extension through technology transfer and adoption to improve the industry's competitiveness. We have met huge growth in the past years and now the company has become an international enterprises. Headquartered in Dubai, we have R&D Centres in Australia, China, Philippines, and Turkey. We have also representative offices in different states of Australia, USA and China. Our success is based on an experienced and qualified team of specialists. In our PMO structure, we have Program & Portfolio Manager, senior Project Managers, Solution Architects, and Governance & Account Executive Team. We are staffing more than 250 software development experts in different R&D centres. Synergy IT Group team always aims to bring clients only new values implementing the best high quality innovative solutions, which are precisely adapted to their needs.

Our team members are highly skilled in various technologies, processes and industry domains. We provide services such as:

- **SOFTWARE DEVELOPMENT**
- **WEB DEVELOPMENT**
- **MOBILE APPLICATION DEVELOPMENT**
- **IT INFRASTRUCTURE**
- **PROJECT MANAGEMENT**

We have developed applications / Systems in the financial, manufacturing, government, education and e-commerce sectors with the highest quality and the best industrial standards.

This industry experience, combined with our expertise in using the latest technologies, enables us to successfully adapt to our clients' diverse needs.

When you partner with us, you will be working with the highest-quality talent and project managers, who will exceed the level of customer service expected from a global service provider.

© 2006 The Authors
Journal compilation © 2006 Blackwell Publishing Ltd

- ## IT INFRASTRUCTURE

SOFTWARE DEVELOPMENT

Our services extend beyond programming- we are experts on System Architecture, we provide Solutions to whether it is a new project, or a struggling existing system, tailored to your exact requirements.

Be it a software product or a custom solution that you need, Synergy IT Group can offer your company end-to-end development services to make your project get off flying.

Our team of over 250 staff are highly experienced (some with over 20 years Software Development experience) and are well informed of the latest industry trends and environmentally sustainable practices.

Recognising that our team provide not only software, but also solutions to help you improve the efficiencies, furthermore, assistant you to enhance your company's market competitiveness.

We provide software development services including:

- **SOFTWARE CUSTOMIZATION**
- **PRODUCT DEVELOPMENT**
- **SOFTWARE REENGINEERING**

We follow the steps of the Systems Development Life Cycle, focus on the:

- **PROGRAMMING LANGUAGE COMMITMENT**
- **ALGORITHMS AND DATA FUNDAMENTALS**
- **TEST-DRIVEN DEVELOPMENT**
- **EVENT-DRIVEN, ASPECT-DRIVEN AND CONCURRENT-DISTRIBUTED PROGRAMMING**
- **SOURCE CONTROL DISCIPLINE**
- **TOOL COMMITMENT**
- **DOCUMENTATION**

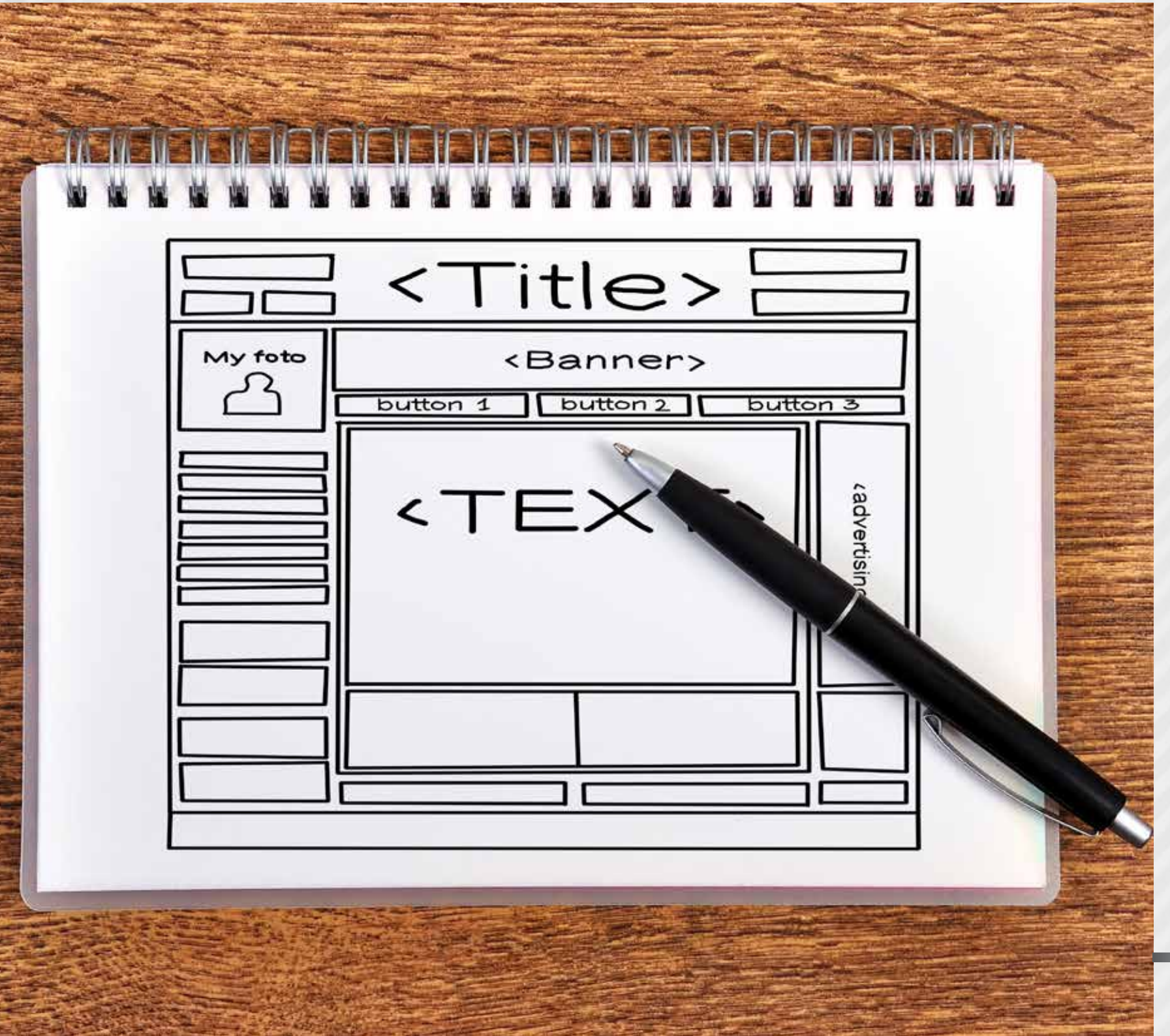
Our services provide much more comprehensive web-based internet applications other than just the simplest static pages. Web development is a broad term for the work involved in developing a web site for the Internet or an intranet. Web development can range from developing the simplest static single page of plain text to the most complex web-based internet applications, electronic businesses, and social network services. Instead of running executable code on a local computer, users can interact with online applications to create new content from many locations, no need to access to a specific workstation for their application environment. Web development has also impacted personal networking and marketing. Websites are no longer simply tools for work or for commerce, but serve more broadly for communication and social networking. Websites such as Facebook and Twitter provide users with a platform to communicate and organizations with a more personal and interactive way to engage the public. Since the commercialization of the web, web development has been a growing industry. The growth of this industry is being pushed especially by businesses wishing to sell products and services to online customers.

WEB DEVELOPMENT

With our highly experienced employees, we provide a more comprehensive list of tasks to which web development commonly refers, including web design, web content development, client liaison, client-side/server-side scripting, web server and network security configuration, and e-commerce development. Synergy IT Group will merge your great ideas into workable web solutions. With top-talent web application development skills on board, our company will craft compelling web apps and jump-start your business!

The services we have covered include:

- WEBSITE APPEARANCE DESIGN
- DYNAMIC WEB PAGE DESIGN
- MOBILE / TABLET WEB DESIGN
- STATIC WEB PAGE DESIGN
- WEB-BASED APPLICATION DESIGN / SOLUTION





MOBILE APPLICATION DEVELOPMENT

Our services offer multi-platform application which can run on IOS / Android. BeMobile application development is the process by which application software is developed for low-power handheld devices, such as personal digital assistants, enterprise digital assistants or mobile phones. These applications can be pre-installed on phones during manufacturing, downloaded by customers from various mobile software distribution platforms, or delivered as web applications using server-side or client-side processing (e.g. JavaScript) to provide an “application-like” experience within a Web browser.

We have a clear understanding of the differences between the Mobile Application and Desktop Application, therefore, we always focus on the features on the Mobile Application itself, our development emphasises on the following aspects:

- THINK ABOUT THE USER EXPERIENCE
- INCORPORATE THE SENSORS AND FORM FACTOR
- MESH SERVICES WITH A BUSINESS CONTEXT
- EMPOWER THE USERS
- CONSIDER REAL-TIME

The services we have covered include:

- IPHONE APP DESIGN
- IPAD APP DESIGN
- MOBILE / TABLET WEB PAGE DESIGN
- WINDOWS MOBILE APP DESIGN
- ANDROID APP DESIGN
- ANDROID TABLET APP DESIGN
- BLACKBERRY APP DESIGN

SYSTEM INTEGRATION

Integrate Your Applications to Provide Visibility into Complementary Data. We Enterprise software has a tremendous impact on business productivity. No matter how sophisticated the application may be, a single application rarely provides visibility into all the data you need to support business decisions. Therefore to gain needed visibility, multiple complementary applications must be integrated to share, extract, or aggregate needed data.

Synergy IT Group offers IT development services and system integration assistance to help you keep your services running smoothly and efficiently. With profound knowledge of IT software development domain and adept technology insight, our web development company binds discrete software systems, based on different technologies like PHP, Java, .Net, and links your corporate software and web applications with third-party solutions via a number of different APIs.

Synergy IT Group application integration service offerings include:

- **BACK-END INTEGRATION SERVICES**
- **WEB SERVICES DEVELOPMENT**
- **API INTEGRATION AND DEVELOPMENT**
- **DATA INTEGRATION**
- **ENTERPRISE APPLICATION INTEGRATION**



IT INFRASTRUCTURE

Our services provide everything that supports the flow and processing of information. Information technology (IT) infrastructure is the integrated framework upon which digital networks operate. It includes data centres, computers, computer networks, Database Management devices, and a regulatory system.

In Synergy IT Group we provide IT services including:

- ANTI-VIRUS
- BACKUP
- DISASTER RECOVERY
- MANAGED FIREWALL
- SECURITY
- SERVER MANAGEMENT
- SAAS SOFTWARE AS A SERVICE
- SPAM FILTER
- SUPPORT SERVICES

We have a team of highly experienced IT Engineers to design, implement and maintain complex IT infrastructure. We offer IT Helpdesk and Onsite support services to cater for all your computer network needs. Our expertise will provide different solutions on software, hardware and networking. No matter what issues you are facing with IT Infrastructure, we have the expertise to assist you.

SOLUTIONS

1. FACILITY MANAGEMENT
2. WORKFORCE MANAGEMENT
3. WORKFLOW ENGINE
4. CUSTOMER RELATIONSHIP MANAGEMENT
5. ENTERPRISES RESOURCES PLANNING
6. BUSINESS PROCESS MANAGEMENT
7. BUILDING INFORMATION MODELLING
8. DIGITAL MARKETING





FACILITY MANAGEMENT

Maintenance Management System provides Enterprise Asset Management (EAM), Property Management and Computerized Maintenance Management (CMMS) features that facilitates the asset managers to track, maintain and manage their assets, properties, facilities and equipment, and get the best performance throughout their life-cycle. Maintenance Management include the below features and functions:

- ASSET MANAGEMENT
- SERVICES MANAGEMENT
- CONTRACTOR MANAGEMENT
- CONTRACT MANAGEMENT
- LEASE MANAGEMENT
- CAPITAL MANAGEMENT
- SPACE MANAGEMENT
- ENERGY MANAGEMENT
- WASTE MANAGEMENT
- INVOICING & PAYROLL
- BIM INTEGRATION

WORKFORCE MANAGEMENT

Workforce Management provides improved efficiency, accuracy and productivity to the resource management and payroll process of organizations. This system has the roster management module inbuilt and integrates with the time & attendance and access control hardware systems to provide attendance, late clocking exceptions, overtime information of employees to the HR, Payroll and their respective departments.

Workforce Management include the below features and functions:

- **EMPLOYEE PROFILE**
- **SHIFT MANAGEMENT AND ROSTER GENERATION**
- **ROSTER APPROVAL AND RE-ASSIGNMENT**
- **EMPLOYEE / DEPARTMENT SHIFT CALENDAR**
- **TRACK TIME-IN AND TIME-OUT OF EVERY PERSONNEL**

- **LATE CLOCK-IN, EARLY CLOCK-OUT AND OTHER EXCEPTIONS LIST**
- **OVERTIME CALCULATION AND REPORTING**
- **LEAVES REQUESTS, APPROVALS WORKFLOW**
- **PERMISSIONS / ON-DUTY REQUESTS, APPROVALS WORKFLOW**
- **INTEGRATION WITH MULTIPLE ACCESS CONTROL SYSTEMS**
- **INTEGRATION WITH OTHER HR / PAYROLL SYSTEMS**
- **MOBILE SMS BASED CLOCK-IN/OUT AND LEAVE REQUESTS**
- **EMPLOYEE TRACKING**
- **COMPLIANCE MANAGEMENT**
- **KPI MANAGEMENT**





WORKFLOW ENGINE

Workflow Designer & Engine is a full-fledged workflow management tool that allows administrators to implement complex workflows involving multi-level approvals, rule based branching etc. This extends the customization and expansion capabilities of Office Automation (OA) applications.

Workflow Engine includes the below features and functions:

- **SETUP AND MANAGE COMPLEX WORKFLOW RULES AND LOGICS TO MANAGE COMPLEX AND DIVERSE BUSINESS**
- **PROCESSES OF EVERY ORGANIZATION FUNCTION**
- **ROUTING OF WORKFLOWS BASED ON USER ACTIONS LIKE APPROVALS, REJECTIONS AND UPDATE OF KEY INFORMATION**
- **EASILY CONFIGURABLE APPROVAL REQUEST EMAIL MESSAGES**
- **REMINDERS OF PENDING APPROVALS**

- **WITHIN NETWORK / OUTSIDE NETWORK APPROVALS ENABLING REMOTE APPROVALS ON IMPLEMENTATIONS WITHIN NETWORK**
- **SUPPORTS WEB SERVICE CALLS, WCF CALLS, STORED PROCEDURE CALLS, SQL QUERY BUILDER ETC.**
- **DETAILED TRACKING OF ALL OPERATIONS MAINTAINING AUDIT LOG / HISTORY**

CUSTOMER RELATIONSHIP MANAGEMENT (CRM)

This comprehensive, customer relationship management (CRM) solution is based on the full range of CRM functionality, it provides simplified features and focuses on relationship optimizing.

Customer relationship management (CRM) is a model for managing a company's interactions with current and future customers. It involves using technology to organize, automate, and synchronize sales, marketing, customer service, and technical support.

Customer Relationship Management includes the below features and functions:

- **MARKETING AUTOMATION**
- **SALES FORCE AUTOMATION**
- **CUSTOMER SERVICE AND SUPPORT**
- **PARTNER MANAGEMENT**
- **APPOINTMENTS MANAGEMENT**
- **CONTRACT MANAGEMENT AND CREATION**
- **PROJECT AND TEAM MANAGEMENT**
- **INTERNET SALES**
- **E-MAIL RESPONSE MANAGEMENT**
- **CLOUD ACCESS**
- **SOCIAL NETWORK MEDIA SUPPORT**

We offer subscription-based web tools (cloud-based PaaS) and Software as a Service (SaaS). Our systems are equipped with mobile capabilities, making information accessible to remote sales staff.





ENTERPRISE RESOURCES PLANNING (ERP)

Support innovation, operational excellence, and end-to-end business processes.

Enterprise Resource Planning (ERP) solution helps integrate management, staff, and equipment, combining all aspects of your business into one system in order to facilitate every element of the manufacturing process.

Enterprise resource planning (ERP) is a cross-functional enterprise system driven by an integrated suite of software modules that supports the basic internal business processes of a company.

Enterprise Resources Planning solution includes the below features and functions:

- ACCOUNTING SYSTEM
- HUMAN RESOURCES (HR) MANAGEMENT
- MANUFACTURING MANAGEMENT
- CUSTOMER RELATIONSHIP MANAGEMENT (CRM)
- OTHER BUSINESS FUNCTIONS
- SPECIALIZED FEATURES FOR A PARTICULAR INDUSTRY OR TYPE OF MANUFACTURING
- CLOUD SERVICE

Our ERP provides rich external interfaces which makes it easier to be integrated into other systems at low operation costs and time with minimized data loss risk.

BUSINESS PROCESS MANAGEMENT

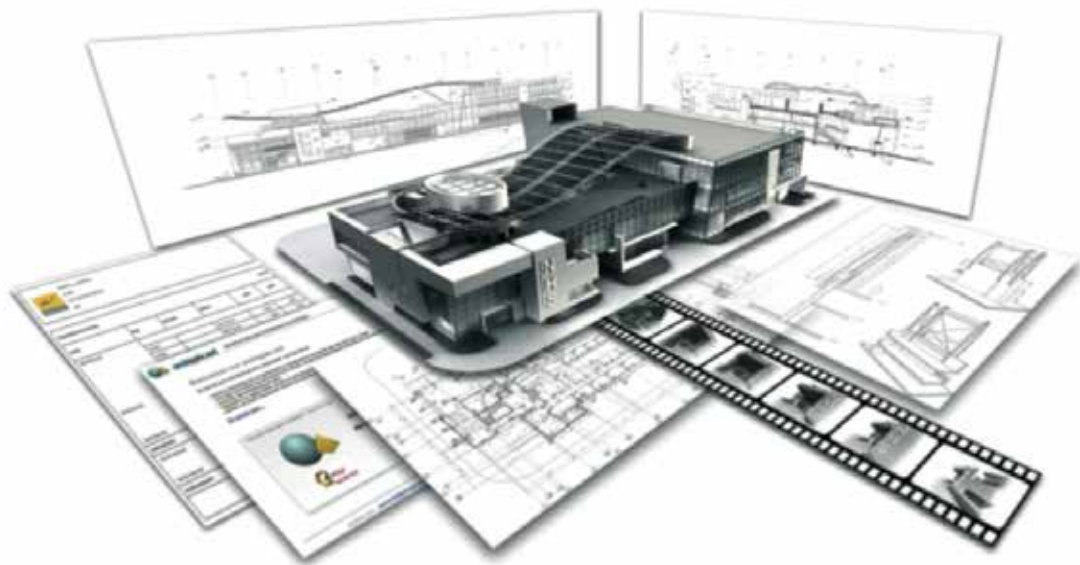
Makes workflow more effective, more efficient and more capable of adapting changes. Business process management (BPM) is a systematic approach to making an organization's workflow more effective, more efficient and more capable of adapting to an ever-changing environment. A business process is an activity or set of activities that will accomplish a specific organizational goal. The goal of BPM is to reduce human error and miscommunication and focus stakeholders on the requirements of their roles. With our expertise on business process and consultancy, we design BPM to combine people, process and technology to improve organizational performance and customer value.

Gain control of your business process and adopt BPM for:

- **PROCESS VISIBILITY: THE ABILITY TO 'SEE' END-TO-END PROCESSES - SINGLY AND IN THE WIDER CONTEXT AND IN AN INTUITIVE**
- **WAY THAT EVERYONE UNDERSTANDS**

- PROCESS OWNERSHIP: ACCOUNTABILITY FOR IMPROVEMENT OF END-TO-END PROCESSES (ACROSS THE EXTENDED ENTERPRISE INCLUDING ACTIVITIES OUTSOURCED OR IN SHARED SERVICES)
- STRATEGIC ALIGNMENT: LINE OF SIGHT BETWEEN STRATEGY AND FRONT LINE OPERATIONAL IMPROVEMENT ACTIVITIES
- PERFORMANCE METRICS: KEY PERFORMANCE INDICATORS (KPIs) EMBEDDED WITHIN PROCESSES TO PROVIDE IMMEDIATE
- FEEDBACK ON PERFORMANCE, AND THE IMPACT OF IMPROVEMENT ACTIVITIES
- ORGANIZATIONAL CHANGE MANAGEMENT: GET PEOPLE READY, WILLING, AND ABLE TO ACCEPT AND EMBRACE NEW WAYS
- OF WORKING WITH THE GOAL OF ORGANIZATIONAL CHANGE TO INVOLVE PEOPLE, NOT BE IMPOSED ON PEOPLE





Our BIM solution is beyond only applications, we provide a platform which can be integrated with Facility Management, Security Management, Device Tracking System and much more! Building Information Modeling (BIM) is a revolutionary technology and process that has quickly transformed the way buildings are conceived, designed, constructed and operated. BIM always work in order to share as much knowledge within the construction industry as possible. We bring project material and professional models together in one model that all involved parties can use. Such a model can help to coordinate consultants' projects for the BIM data to be used for tendering, take offs, pricing (4D), time schedules (5D) and logistics, Facility Management (6D). With the right tools and server technology, BIM projects will be divided between the parties, so that everyone has the opportunity to make changes, that will automatically become visible for everyone involved in a given building project. This is an incredibly effective way to ensure high quality and efficient solutions and allows consultants to create better architecture. With BIM the contractor always has an updated base to calculate cost and the drawings become a dynamic extension of the model. It is advantageous to share BIM project between the parties, on the construction site, where the communication between the contractors and the consultants will be take place in a 3D model. The model is updated and adjusted during construction. This means that there is an accurate model of the completed building in the end. This "as-built" model is then used as basis for operation and maintenance.

BUILDING INFORMATION MODELING (BIM)

The construction process becomes more efficient and all parties can benefit large gains. The building has fewer errors and is built faster at a lower cost. Also the finished result will be closer to the client's wishes. This means that the investment in a proper BIM working method pays off from the first project itself.

- **BIM MEANS NOT ONLY USING THREE-DIMENSIONAL INTELLIGENT MODELS BUT ALSO MAKING SIGNIFICANT CHANGES IN THE WORKFLOW AND PROJECT DELIVERY PROCESSES.**
- **BIM REPRESENTS A NEW PARADIGM AND IT HAS THE POTENTIAL TO PROMOTE GREATER EFFICIENCY AND HARMONY JOURNAL OF CONSTRUCTION ECONOMICS AND BUILDING.**
- **BIM ALSO SUPPORTS THE CONCEPT OF INTEGRATED PROJECT DELIVERY (IPD) WHICH IS A NOVEL PROJECT DELIVERY APPROACH TO INTEGRATE PEOPLE, SYSTEMS, BUSINESS STRUCTURES AND PRACTICES**
- **INTO A COLLABORATIVE PROCESS TO REDUCE**

WASTE AND OPTIMIZE EFFICIENCY THROUGH ALL PHASES OF THE PROJECT LIFE CYCLE.

- **BIM CAN BE INTEGRATED WITH OTHER SYSTEM TO PROVIDE EASY-TO-USE AND DIRECT VIEWS ON OVERALL STRUCTURE AND DETAILS INFORMATION TO ASSIST CUSTOMERS TO MAKE DECISIONS,**
- **IT CAN BE EASILY EXTENDED INTO CUSTOMERS' CURRENT SYSTEMS DUE TO ITS WEAK CONNECTION OUTSIDE AND WELL-DEVELOPED EXTERNAL INTERFACES. MORE SPECIFICALLY, OUR SOLUTION USE**
- **THE BIM FOR FM TO FACILITATE LIFE-CYCLE BUILDING PROCESS INTEGRATION AND SHARING DIGITAL DATASETS HAS BEEN STARTED RECENTLY TO CHANGE THE WAY HOW BUILDINGS NEED TO BE OPERATED AND MAINTAINED, IT'S BEEN PROVED CAN REDUCE THE CURRENT FM RUNNING COSTS AND RESPONSE TIME.**

DIGITAL MARKETING (SEARCH ENGINE OPTIMIZATION)

Increase Your Traffic and Leads by up to 200% with Synergy IT Group's Proven Methods. Creating an effective, yet comprehensive online marketing plan requires different Search Engine techniques available for achieving your online marketing goal. To help you meet your business objectives, Synergy IT Group provides a full range of services in Search Engine Marketing (SEM), Search Engine Optimization (SEO), and Web Site Conversion (UI) - Landing Page Optimization.

Every month, over 450 million Internet users worldwide perform around 11 billion searches. If even a small fraction of these searches pertain to every month, if even a small fraction of these searches pertain to your business, you could potentially be losing thousands of dollars in monthly revenue if your website isn't optimized correctly. That's why search engine marketing and optimization is so important for your business. Synergy IT Group has the experts to get your website to the top and keep it there.

Optimizing a website for the major search engines will help ensure your website ranks with the most relevant keywords when consumers search. No company can afford to miss client opportunities because they're not ranked properly. The most important aspect of any successful search marketing campaign is metrics. Planning, implementing, and measuring the correct ROI is most important aspect of any successful search.. Planning, implementing, and measuring correct ROI on the site is crucial to ensure the success of any client campaign – and Synergy IT Group ensures that your campaign is managed optimally by making the right decisions, based on correct and timely reporting.



SECTORS WE SERVE

1. GOVERNMENT ORGANIZATION
2. MANUFACTURING FACILITIES
3. COMMERCIAL COMPLEX
4. RESIDENTIAL COMPLEXES
5. MEDICAL SERVICES





GOVERNMENT ORGANIZATIONS

Our solution for the Government Organizations includes two parts:

- DATA STORAGE
- E-OFFICE

Data storage solutions help federal clients simplify the management of growing data while cutting cost, the clients can get information to the right people at the right time, and cut the cost of storing and managing data. This makes it possible to let clients deploy affordable via shared, virtualized infrastructures, build an efficient storage foundation, the benefits are shown below:

- USE MUCH LESS STORAGE THAN THE TRADITIONAL APPROACHES
- MAKE GOVERNMENT MORE EFFICIENT, MORE SECURE AND MORE EARTH FRIENDLY
- OVERCOME MULTIPLE SOFTWARE APPLICATIONS AND MULTIPLE STORAGE SYSTEMS

- SMOOTH OUT ROUTING
- CLOUD SERVICE ENABLE CLIENTS TO ACCESS DATA FROM ANYWHERE AT ANY TIME, REDUCE THE RISKS ON DATA LOSS

E-Office is used to automate File Management right from the creation of a file to its final archival. This tool is equipped to track workflows. It offers:

- FILE MOVEMENT AND TRACKING
- DOCUMENT NOTE APPROVAL PROCESS
- DOCUMENT CORRESPONDENCE MANAGEMENT
- PUBLIC SERVICES

The Common issues in Manufacturing Facilities are below:

- LOST OPPORTUNITIES TO COORDINATE ALL ASPECTS OF MANUFACTURING
- NABILITY OF MANUFACTURING SYSTEMS TO ACCESS FACILITIES DATA AND SYSTEMS LEADS TO LOST OPPORTUNITIES TO COORDINATE ALL ASPECTS OF MANUFACTURING
- PROPRIETARY VENDOR-SPECIFIC SOLUTIONS FOR FACILITIES MANAGEMENT LEADS TO ADDITIONAL INTEGRATION ISSUES
- ENGINEERING AND MANUFACTURING STAFF HAVE LITTLE OR NO DOMAIN KNOWLEDGE OF THE FACILITIES APPLICATIONS, LEADING TO INABILITY TO CONTROL THESE VARIABLES
- UNCONTROLLED AND OFTEN UNMONITORED ENVIRONMENTAL SYSTEMS INTRODUCE COSTS RELATED TO THE MANUFACTURING FACILITY OR THE MANUFACTURING PROCESS

MANUFACTURING FACILITIES

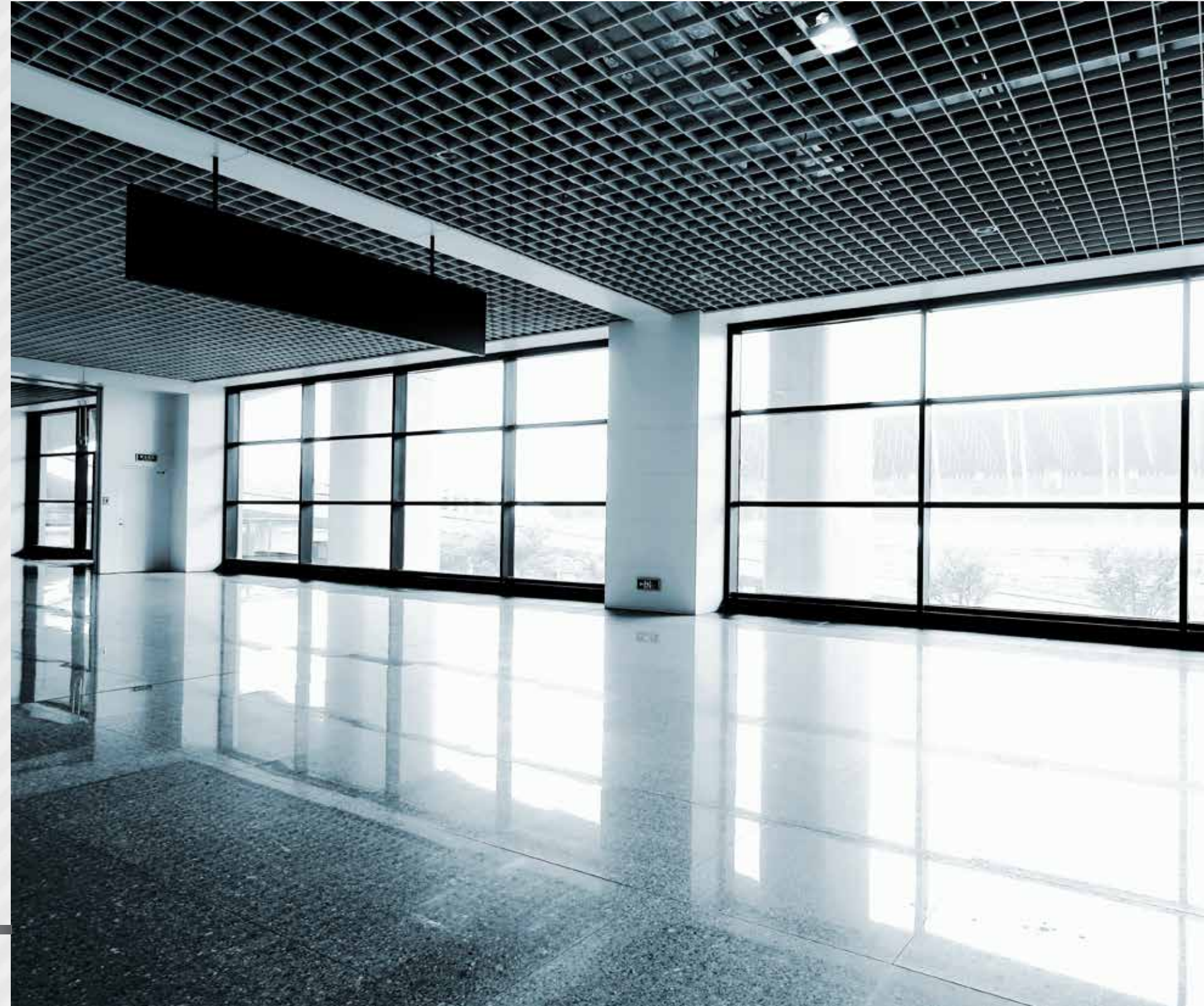
- INABILITY TO TRACK AND ANALYZE FACILITIES AND MANUFACTURING DATA AS INTEGRATED AND INTER-DEPENDENT VARIABLES MASKS PROBLEMS IN THE OVERALL OPERATION

We realized that the issues above could be simplified if the manufacturing process and facilities management can be viewed as one environment, and if this environment is approached with an integrated solution where the facilities management and manufacturing systems are combined, these issues above become manageable, our Manufacturing Facilities Management Solutions provides a comprehensive view of both facilities and manufacturing operations which will help you to:

- MONITOR AND CONTROL THE OF ALL RELATED VARIABLES WITHIN THE MANUFACTURING PROCESS
- MANAGE TOTAL PRODUCTION COSTS
- IMPROVE RECORDKEEPING

- MANAGE PRODUCT QUALITY (FACILITIES ENVIRONMENTAL FACTORS)
- ENSURE DATA MONITORING, COLLECTION AND HISTORIZATION ARE CRITICAL TO THE DELIVERY OF A PRODUCT THAT MEETS INDUSTRY AND GOVERNMENT SPECIFICATIONS;
- REDUCE VARIATIONS IN PRODUCT QUALITY FROM FACILITY TO FACILITY AT MULTIPLE SITES
- REDUCE TOTAL OPERATIONAL COSTS;
- INCREASES EFFICIENCY;
- HELPS MANAGE COSTS FOR THE FACILITY AND THE PRODUCT.





COMMERCIAL COMPLEX

We provide Integrated Solution for managing security, cleaning and parking services, those solutions have been tested and applied in many supermarket chains and shopping centers successfully. The services are included as following:

- WIRED AND/OR WIRELESS NETWORKS (DESIGN, INSTALLATION & MAINTENANCE)
- BILLING SYSTEM
- PARKING SYSTEM
- ELEVATORS ACCESS SYSTEM
- MONITORING SYSTEM
- CENTRALIZED CONTROL SYSTEM
- SECURITY COMMAND CENTER
- LIGHTS TIMER CONTROL
- SPRINKLER CONTROL SYSTEM

We always focus on the trends in the market continue emphasize on what matters most, provides customer service that foster long-lasting client relations.

- MANAGE PRODUCT QUALITY (FACILITIES ENVIRONMENTAL FACTORS);
- ENSURE DATA MONITORING, COLLECTION AND HISTORIZATION ARE CRITICAL TO THE DELIVERY OF A PRODUCT THAT MEETS INDUSTRY AND GOVERNMENT SPECIFICATIONS
- REDUCE VARIATIONS IN PRODUCT QUALITY FROM FACILITY TO FACILITY AT MULTIPLE SITES;
- REDUCE TOTAL OPERATIONAL COSTS;
- INCREASES EFFICIENCY;
- HELPS MANAGE COSTS FOR THE FACILITY AND THE PRODUCT.

RESIDENTIAL COMPLEX

We provide a range of Integrated Solutions and Technologies to suit every specific needs for the residents, which include:

- WIRED AND/OR WIRELESS NETWORKS (DESIGN, INSTALLATION & MAINTENANCE)
- BILLING SYSTEM
- PARKING SYSTEM
- ELEVATORS ACCESS SYSTEM
- MONITORING SYSTEM
- CENTRALIZED CONTROL SYSTEM
- SECURITY COMMAND CENTER
- LIGHTS TIMER CONTROL
- SPRINKLER CONTROL SYSTEM





MEDICAL SERVICES

The common issues in Medical Services are:

- **SELF ROSTERING THAT CREATE UNREASONABLE DEMANDS**
- **FULL-TIME EMPLOYEES ARE DISADVANTAGED IN HAVING TO WORK THE UNDESIRABLE SHIFTS**
- **REQUESTS FOR FATIGUE AND STUDY LEAVE ARE OFTEN UNABLE TO BE MET**
- **AS NO BACKFILL IS AVAILABLE**
- **DIFFICULTIES IN REPLACEMENT OF STAFF IN RURAL AND REMOTE LOCATIONS**
- **THE LACK OF EXPERIMENTATION OF DIFFERENT SHIFT LENGTHS**
- **A LACK OF ORGANIZATIONAL ROSTERING PRINCIPLES OR GUIDELINES**

Our Rostering Solution is designed to provide managers and staff with a comprehensive guide to best practice rostering, it is to not just automate roster creation but to make better rosters for both patients and staff alike. We designed it to ensure that the full benefits of are realized, and that follow-on processes - including bank and payroll processing. Furthermore, the solution also delivers multi-location rostering, managing not just when a nurse is working but also where - within a single roster. Our powerful tools in the solution can configure the principles dynamically based on the clients' requirements, which makes it easier to adapt to the new system, also help the clients to:

- **SAVE COST**
- **MINIMIZE OVER COVERAGE**
- **INCREASE WORK PERFORMANCE**
- **HIGHER STAFF RETENTION AND A RECRUITING AID**
- **REDUCE IN ABSENTEEISM AND TARDINESS**
- **INCREASE THE EMPLOYEES' SATISFACTION WITH THEIR SCHEDULES**
- **INCREASE QUALITY OF SERVICE**

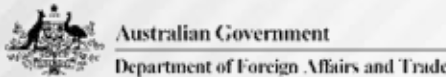
TECHNOLOGY

- MICROSOFT.NET
- MICROSOFT VISUAL STUDIO
- JDK
- ECLIPSE FOR JAVA
- SQL SERVER
- ORACLE
- MYSQL
- PHP
- ASP
- JQUERY
- XML
- RATIONAL ROSE
- MICROSOFT ROSE
- MICROSOFT VISIO
- MICROSOFT PROJECT
- ANDROID DEVELOPMENT
- XCODE
- IOS
- ANDROID



CLIENTS

& PARTNERS



CONTACT US



BEYOND INNOVATION

HEAD OFFICE:

Lot 1 Level 2, 23-29 South Street,
Rydalmere, NSW 2116 Australia

TEL: +61 (0)2 8846 5622

FAX: +61 (0)2 8846 5666

Website: www.synergyitgroup.com.au

Email: info@synergyitgroup.com.au